



**SkyFireEnergy**  
Solar Energy Systems



*Hundreds of solar systems designed and installed since 2001!*

**Solar is now more affordable than ever – You are already paying for electricity. Why not turn this expense into an investment?**

## **WHY CHOOSE SKYFIRE FOR YOUR SOLAR PROJECT?**

### **> TRUSTED SOLAR PROVIDER**

SkyFire is the largest solar company in Western Canada having installed more than 10 MW of solar capacity since 2001.

### **> LOCALLY OWNED & OPERATED**

Our local staff experts in Calgary, Edmonton, Saskatoon, Regina and Penticton serve all of Alberta, Saskatchewan, British Columbia, Manitoba and Northern Canada.

### **> PURCHASING POWER**

As a member of Amicus Solar Cooperative, we are able to provide more competitive pricing to our customers due to our increased purchasing power with preferred vendors and operational efficiency gains.

### **> PRODUCT KNOWLEDGE**

We recommend products for our clients that we know through experience are reliable, proven in Western Canada and are bankable. A quality system starts with quality components.

### **> STAFF TRAINING AND EXPERIENCE**

Having completed more than 600 grid tied solar PV systems, our team of Professional Engineers ensures your project is designed and built to the highest standards.

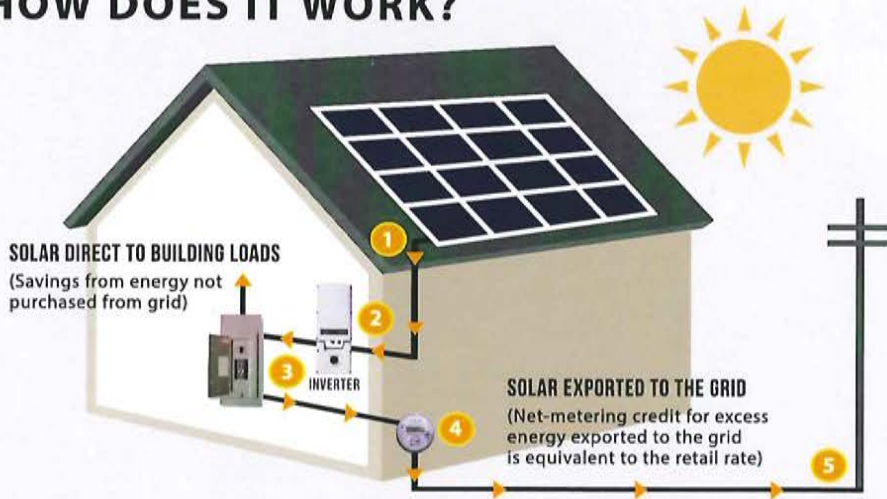


**CONTACT US FOR A FREE SOLAR ESTIMATE!**

[www.SkyFireEnergy.com](http://www.SkyFireEnergy.com) | [info@SkyFireEnergy.com](mailto:info@SkyFireEnergy.com) | 778 476 8149



# HOW DOES IT WORK?



- 1** Solar panels have photovoltaic (PV) cells which convert sunlight into direct current (DC) power.
- 2** The inverter(s) convert DC electricity from the solar array to the AC electricity found in the building.
- 3** The inverter feeds electricity into the electrical distribution system.
- 4** The utility meter keeps track of both the energy imported from the grid and the energy exported to the grid. Net-metering credits are reflected on your electricity bill.
- 5** Your building remains connected to the utility grid to supply you with electricity when you need more power than your system is producing, such as at night.



## GRID TIED PV SYSTEM EXAMPLES

System Size (kW DC)	Inverter Type	Racking Type	Roof Space Required (sqft)	Annual System Production (kWhrs)**	Net System Cost*	\$/Watt
3	Micro	Rooftop	225	3,000 - 3,500	\$8,450	\$2.82
6	SolarEdge	Rooftop	450	6,000 - 7,000	\$13,860	\$2.31
10	SolarEdge	Rooftop	750	10,000 - 11,800	\$22,000	\$2.20
12	SolarEdge	Rooftop	900	12,000 - 14,200	\$25,500	\$2.12

\*System costs will vary with inverter type, PV module brand and roof type (asphalt, metal, concrete, etc). These system costs do not include for any municipal building or development permits if required. Systems include 25 year solar module production warranty, 10, 15 or 25 year inverter warranty, and 5 year SkyFire Energy installation warranty.

\*\*System production will vary with angle, azimuth, inverter type, shading, etc.



The average BC residence uses approximately 11,000 kWh per year. An energy efficient home with gas heat may use less than 7,000 kWh per year.



## INTEGRATED DESIGN

Every SkyFire Energy install is engineered to fit your home, your budget and your goals.

3D rendering of the proposed system can be provided in order to determine aesthetics and roof layout.

CONTACT US FOR A FREE SOLAR ESTIMATE!

[www.SkyFireEnergy.com](http://www.SkyFireEnergy.com) | [info@SkyFireEnergy.com](mailto:info@SkyFireEnergy.com) | 778 476 8149



# SOLAR SOLUTIONS FOR FIRST NATIONS & METIS SETTLEMENTS



**SkyFireEnergy**  
Solar Energy Systems



*Generate Clean & Affordable Solar Power To Meet Your Community's Electricity Needs*

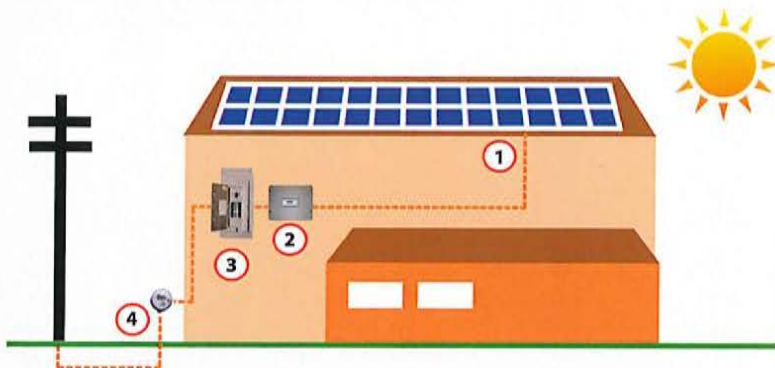
**Solar is now more affordable than ever – You are already paying for electricity. Why not turn this expense into an investment?**

## WHY INVEST IN SOLAR FOR YOUR COMMUNITY?

- By installing a solar PV system, you'll be able to save on operating costs by producing your own clean power and hedging against uncertain electricity prices. Protect your bottom line while protecting the environment.
- With no moving parts, solar is incredibly reliable with product warranties of 10 – 25 years.
- The solar PV system will be designed to meet your budget, layout and electrical needs. Whether it's a ground mount on your reserve or a rooftop system on a community building, we will design and build a system to meet your requirements.



## HOW DOES IT WORK?



- 1 Solar photovoltaic (PV) modules convert sunlight into direct current (DC) power.
- 2 The inverter(s) convert DC electricity from the solar array to the AC electricity found in the building.
- 3 The inverter backfeeds electricity into the electrical distribution system.
- 4 The bidirectional meter, which is supplied by the Wire Service Provider, keeps track of both the energy imported from the grid and the energy exported to the grid. Net-metering credits are reflected on your electricity bill.

**CONTACT US FOR A FREE SOLAR ESTIMATE!**

[www.SkyFireEnergy.com](http://www.SkyFireEnergy.com) | [info@SkyFireEnergy.com](mailto:info@SkyFireEnergy.com) | 778-476-8149



# WHY CHOOSE SKYFIRE FOR YOUR SOLAR PROJECT?

## ➤ TRUSTED SOLAR PROVIDER

SkyFire is the largest solar company in Western Canada having installed more than 10 MW of solar capacity since 2001.

## ➤ LOCALLY OWNED & OPERATED

Our local staff experts in Calgary, Edmonton, Regina and Penticton serve all of Western Canada.

## ➤ PURCHASING POWER

As a member of Amicus Solar Cooperative, we are able to provide more competitive pricing to our customers due to our increased purchasing power with preferred vendors and operational efficiency gains.

## ➤ PRODUCT KNOWLEDGE

We recommend products for our clients that we know through experience are reliable, proven in Western Canada and are bankable. A quality system starts with quality components.

## ➤ STAFF TRAINING AND EXPERIENCE

Having completed more than 800 grid tied solar PV systems, our team of Professional Engineers ensures your project is designed and built to the highest standards.



## SERVICES PROVIDED:

### ENGINEERING

- Solar prefeasibility and site assessments
- Full system electrical, structural, civil and geotechnical design and engineering
- Project management
- Technical documentation
- Grid connection application for net metering & distributed gen systems
- Permits & regulatory approvals

### SUPPLY

- Solar modules, inverters, monitoring system, combiners, disconnects, interconnection wiring, home run wiring, grounding and hardware
- Operation and maintenance manuals

### INSTALLATION

- Installation of racking, modules and inverters
- Wiring
- Electrical permits
- Turnkey installation
- Ongoing operations & maintenance services



397 kW grid-tied PV - Cowessess First Nation, SK



50 kW grid-tied PV - Haida Gwaii First Nation, BC



39 kW grid-tied PV - Ktunaxa First Nation, BC



15 kW grid-tied PV - Bears Paw First Nation, AB

**CONTACT US FOR A FREE SOLAR ESTIMATE!**

1-87-SKYFIRE-1 | 778-476-8149

Email: [info@SkyFireEnergy.com](mailto:info@SkyFireEnergy.com)

Learn more about how solar works and view more SkyFire Energy systems at:

[www.SkyFireEnergy.com](http://www.SkyFireEnergy.com)





## CUSTOMER DETAILS

NAME

E-MAIL

ADDRESS

REFERRAL / GROUP BUY

## ELECTRICITY USAGE

Electricity Provider

Annual Consumption (kWh)

## INTERNET LOCATION

## ROOF DETAILS

TYPE OF ROOF COVERING

- Asphalt     
  Metal Corrugated     
  Flat Concrete Tiles     
  Other (please specify)
- Spanish Concrete Tiles     
  Metal Standing Seam     
  Cedar Shake

ADDITIONAL CONSIDERATIONS

- Home has an attic     
  Vaulted Ceilings

## SHADING ISSUES

## ELECTRICAL ASSESSMENT

MAIN PANEL

Bus Bar Rating

Brand

Breaker Rating

Model

- Room around panel for inverter

Location

SPECIAL LOADS (Check all that apply)

- Hot Tub / Pool / Steam Room     
  Electric Heat
- Air Conditioner     
  Electric Hot Water

## ELECTRIC VEHICLE INFORMATION

Year      Brand      Model      Multiple EVs     
  Yes (Include Details Below)     
  No

Desired Charging Level     
  Level 1 (<30A)     
  Level 2 (40A)

## NOTES





## **Westbank First Nation Solar Installation: Local Staff Needed**

### **Apprentice Electricians and Labourers**

SkyFire Energy is looking to employ local members for an upcoming 116 kW solar installation at the Westbank First Nation School. The install is currently scheduled to start July 22nd, 2019 on Westbank First Nation and last for roughly 1-2 weeks though the exact install dates may be earlier or later. We are looking to hire 2x local Westbank members to fill the following positions:

- Apprentice Electricians: starting at \$18.15/hour for 1<sup>st</sup> year apprentice scaled up based on apprenticeship level and experience
- General labourer: starting at \$16.00/hour

Due to trade restrictions, non-electrician work is limited to mechanical installation work only.

#### **Primary duties include:**

- Installation of a 116 kW solar electric system for the Westbank First Nation including installation of:
  - Solar racking
  - Solar modules
  - DC interconnection wiring
  - Ballast blocks

#### **Requirements:**

- Apprentice Electrician positions – Electrical apprenticeship and/or electrical experience
- General labourer positions – Construction experience
- Must be able to lift solar modules, or other heavy items
- WHMIS and CSTS safety training and certification

#### **Assets (but not required):**

- Solar training and/or solar installation certification (SAIT, NAIT, CanSIA, NABCEP, SEI, etc)
- Solar installation experience
- Residential, commercial, and industrial electrical experience
- Construction forklift experience and training

Please submit your resume and cover letter to: [landon@skyfireenergy.com](mailto:landon@skyfireenergy.com) by Friday July 12th, 2019

