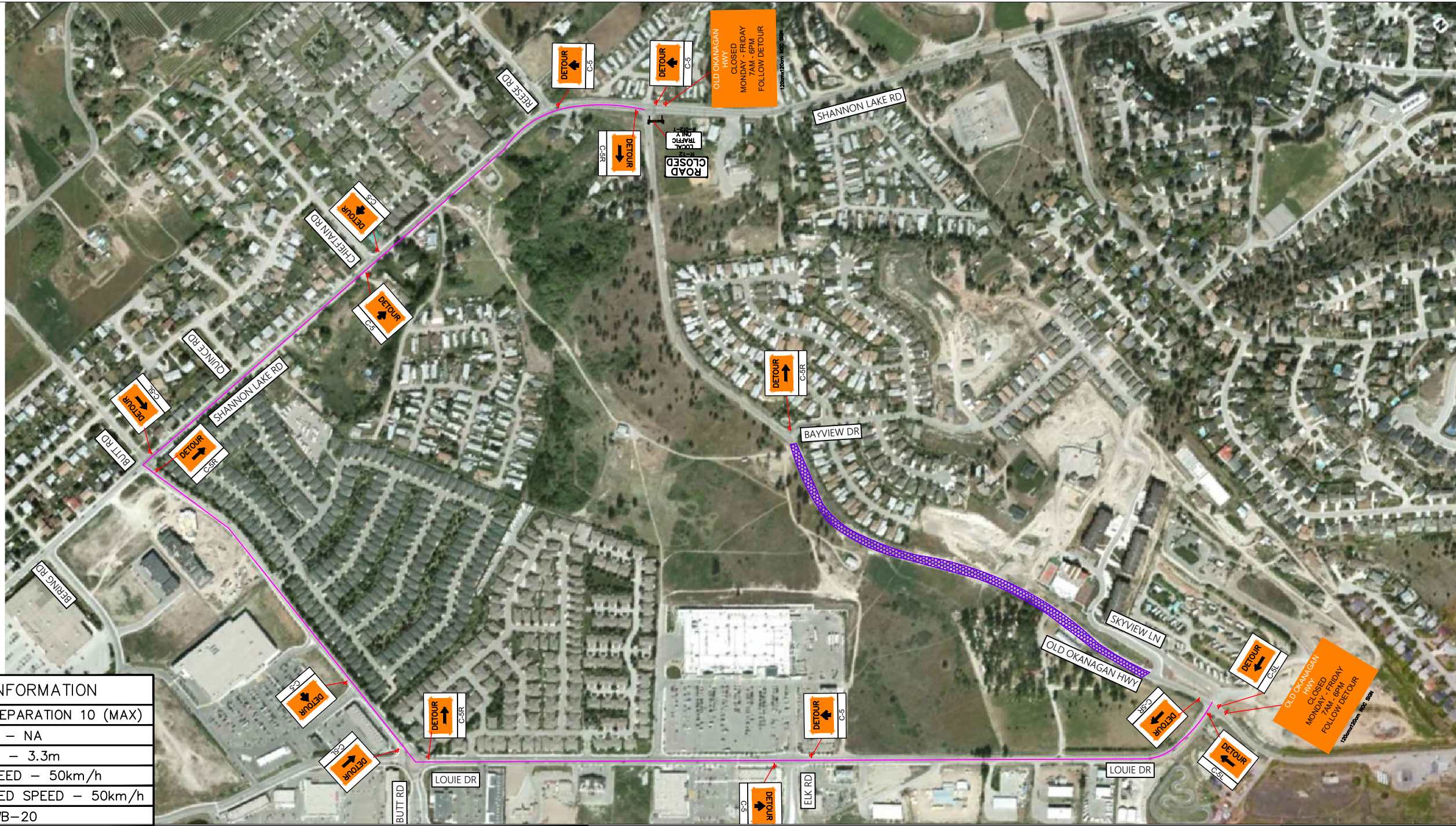
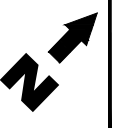


TRAFFIC CONTROL SYMBOL LEGEND

- CLASS 1 BARRICADES
- CLOSURE AREA
- TRAFFIC CONTROL PERSONNEL
- TYPE-D TUBULAR MARKER
- TRAFFIC SIGNAGE
- BUS STOP



GENERAL INFORMATION
TUBULAR MARKING SEPARATION 10 (MAX)
BARREL SEPARATION - NA
MINIMUM LANE WIDTH - 3.3m
EXISTING POSTED SPEED - 50km/h
CONSTRUCTION POSTED SPEED - 50km/h
DESIGN VEHICLE - WB-20

GENERAL NOTES	
<ol style="list-style-type: none"> 1. Old Okanagan Highway to be open during non working hours. Flag person, prepare to stop signs will be covered or removed during non working hours. 2. Traffic Specifications based on the MOTI Traffic Management Manual for Work on Roadways 2020 3. Active Hours of work: 7:00am to 6:00pm Monday - Friday 	<ol style="list-style-type: none"> 4. TCP's to assist with pedestrians as required 5. Site Contact: Jason Spencer 6. Completion of Old Okanagan Highway Improvements Project 7. Duration of work: 8. Transit to be contacted a minimum 5 days prior to implementation

REV	DESCRIPTION	DATE	INITIAL	CITY OF WEST KELOWNA	DWG No.	1A - Detour Route
0	ISSUED FOR INFORMATION	07.05.21	AME	PROJECT: OLD OKANAGAN HIGHWAY IMPROVEMENTS PROJECTS	SCALE:	N.T.S
				CLIENT: DNJ Construction Management	UNIT 8 - 20195 68 AVENUE	KOPER & COMPANY TRAFFIC SERVICES